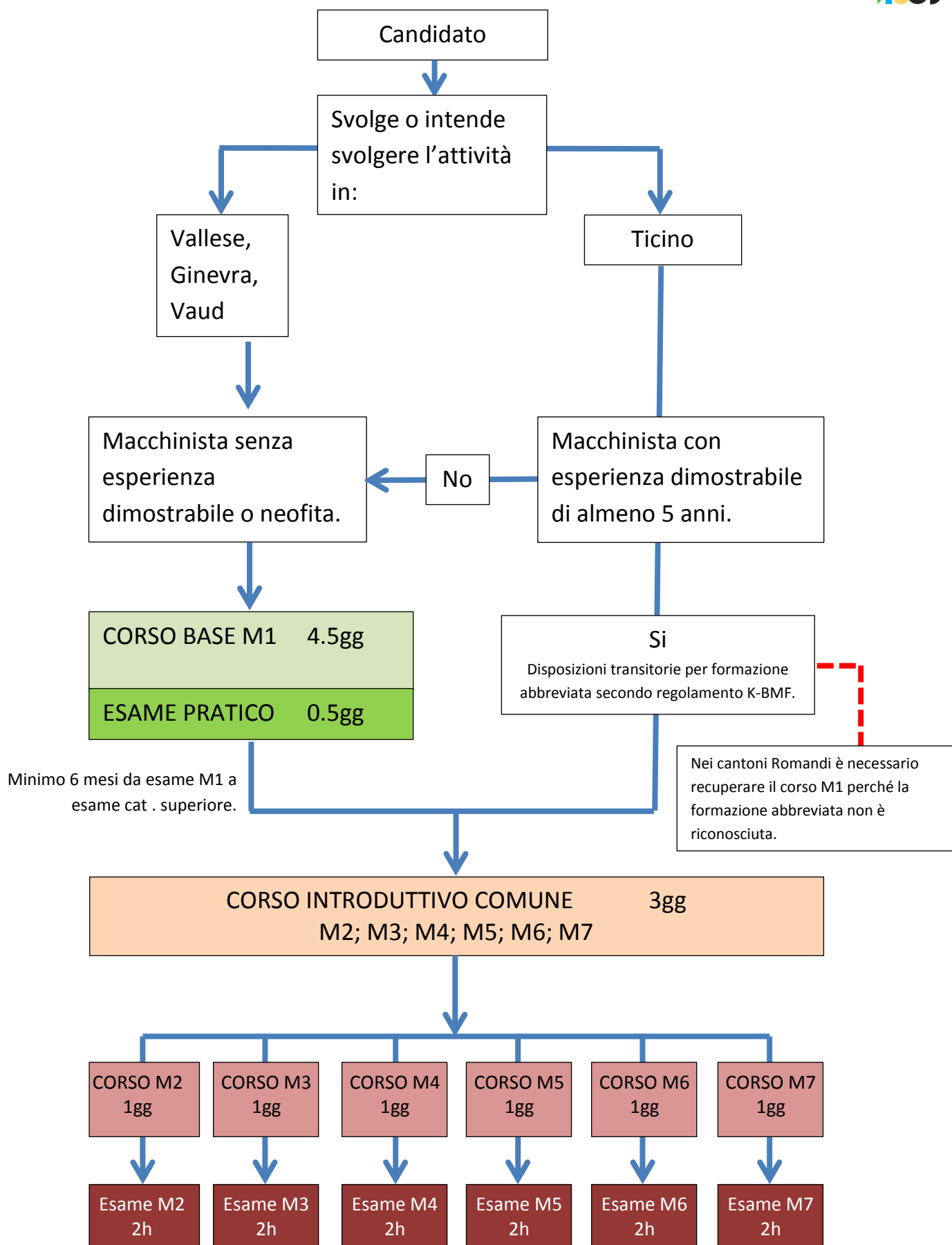


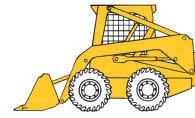
# SCHEMA FORMAZIONE MACCHINISTI PRESSO CFP GORDOLA

centro formazione professionale  
società svizzera impresari costruttori  
sezione ticino

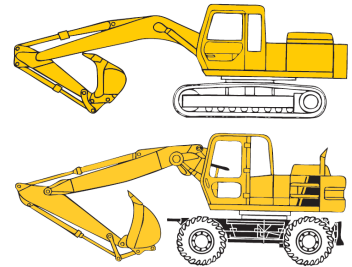


## Categorie secondo K-BMF:

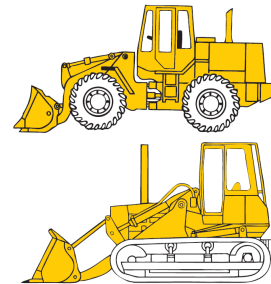
**M1** Piccole macchine da 2 fino a 5 tonnellate;  
\*Dumper fino a 155 q



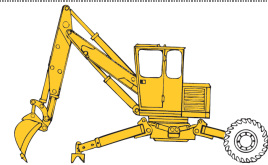
**M2** Escavatori idraulici da 5 t



**M3** Pale cariatrici da 5 t



**M4** Escavatori articolati o rampanti (Ragno)



**M5** Finitrici



**M6** Rulli da 5 t



**M7** Mezzi speciali da definire per ogni tipologia di macchina

